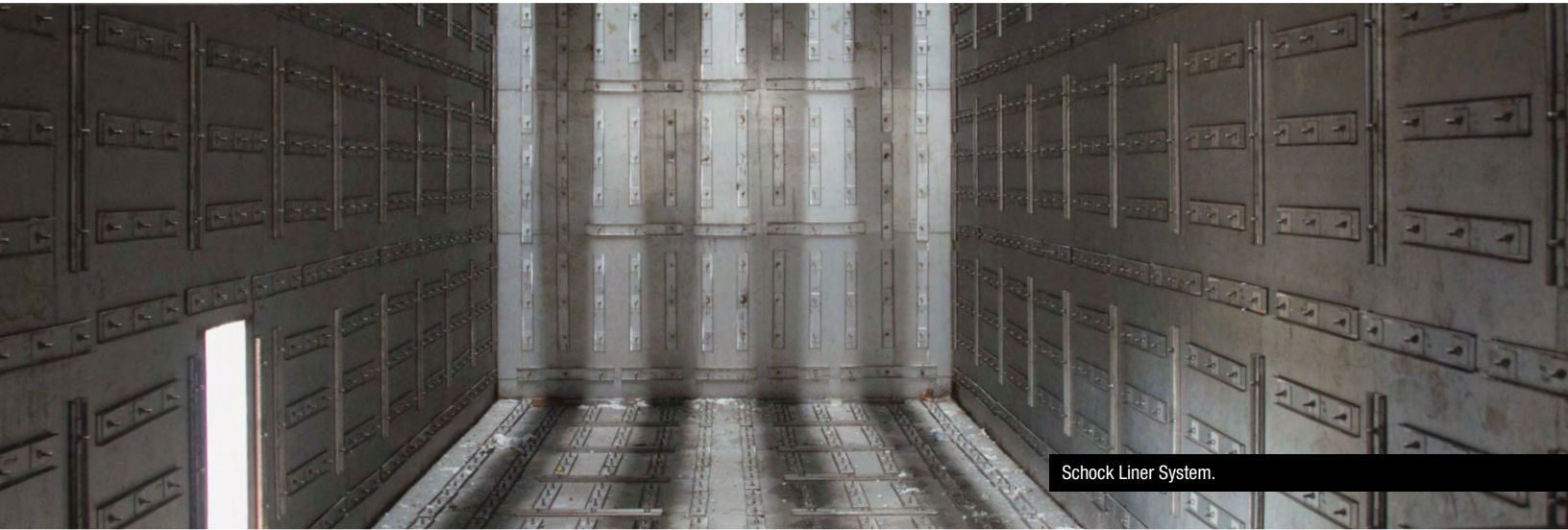


# SCHOCK Exhaust Liner Repair

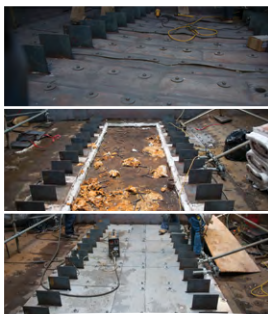
## In-Kind Repair/Reline & Complete Upgrades



Schock Liner System.



Close-up of exhaust liner.



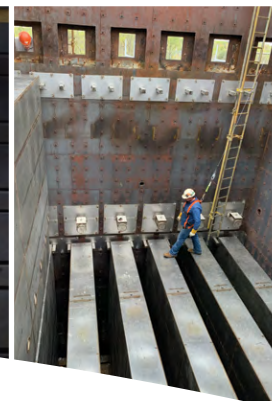
FS7F silencer floor repair.



Proper torquing of the exhaust liner hardware.



Field relining of exhaust diffuser joint.



501F exhaust liner repair.



High-temperature insulation with no through splices.

The insulation and liner system is the heart of your GT plant's exhaust ductwork. The liner must protect the thermal insulation barrier, while being designed to thermally move or "float." At Schock, we take a conservative approach to the liner design, ensuring that your plant gets a liner system that requires zero maintenance. With experience on 1200+ GT exhaust systems, we bring a proven track record of delivering highly reliable duct liner systems.

### Schock Exhaust Liner

- Market-Leading Liner System Design
- Precise, Laser Cut, 11-gage 300 or 400 Series Liner Material
- In-kind or Upgraded 304SS "Stud" System
- Close Stud Spacing, with Large Diameter Studs
- High-Temperature, Bio-Soluble Insulation (safer for workers)
- Double-Seal Access Doors

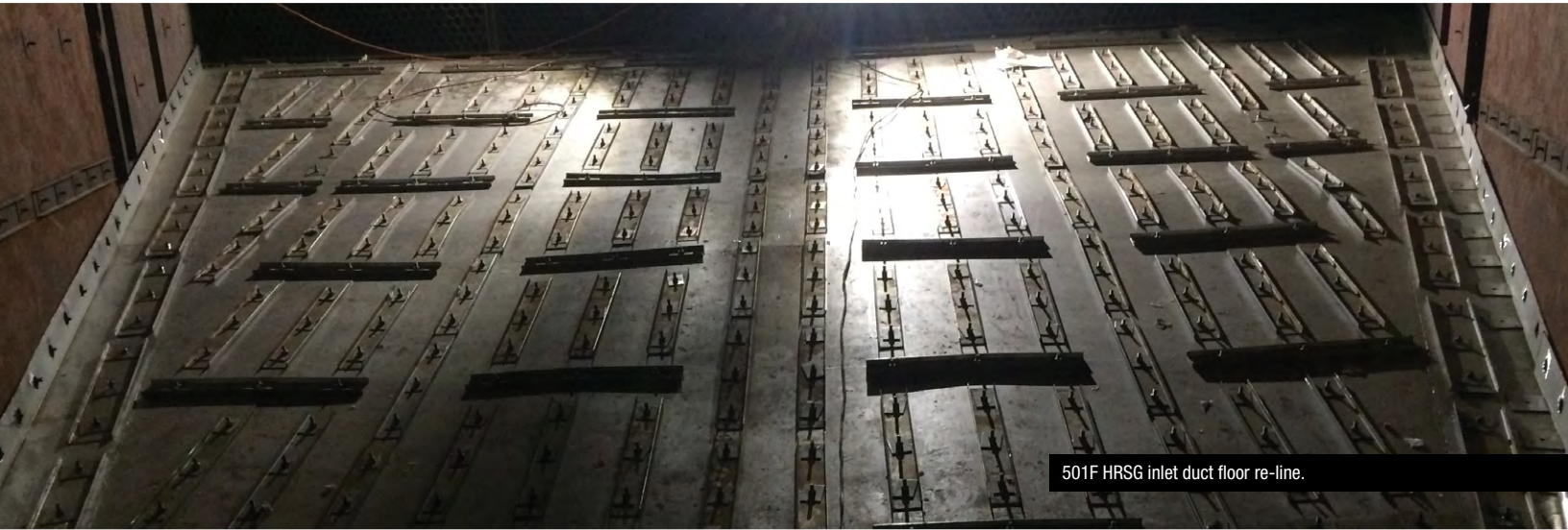
### Plant Services

- Inspection & Repairs As Fast As 1 to 2 Weeks
- Structural Design (PE in 17 states)
- Thermal Design
- CFD (Computational Fluid Dynamics)
- FEA (Finite Element Analysis): Structural & Mechanical
- Acoustic Design & Studies

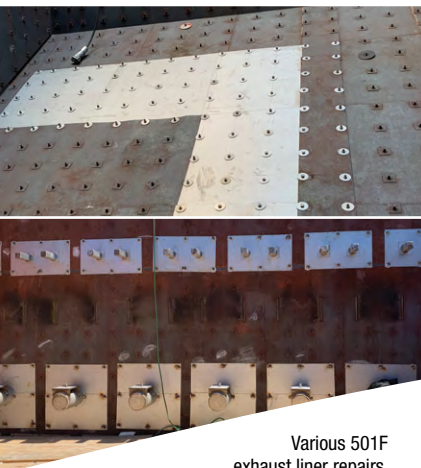


# SCHOCK Exhaust Liner Repair

Inspection & Repairs As Fast As 1 to 2 Weeks



501F HRSG inlet duct floor re-line.



Various 501F exhaust liner repairs.



Various FS7EA exhaust liner repairs.



501F duct floor repair.



Installing high-temperature insulation on back wall of 7F elbow.

**Gene Schockemoehl**  
*President*

[gene@schock-mfg.com](mailto:gene@schock-mfg.com)  
D: 918-609-3600 x200  
M: 918-625-2098  
F: 918-609-3610

**Jeff Graham**  
*Sales & Projects*  
[j.graham@schock-mfg.com](mailto:j.graham@schock-mfg.com)  
D: 918-609-3600 x350  
M: 918-508-5544  
F: 918-609-3610

**Scott Schockemoehl**  
*General Manager*

[scott@schock-mfg.com](mailto:scott@schock-mfg.com)  
D: 918-609-3600 x100  
M: 918-639-3201  
F: 918-609-3610

**Laquinnia Lawson, Jr.,**  
**Professional Engineer**  
*Engineering Manager*  
[llawson@schock-mfg.com](mailto:llawson@schock-mfg.com)  
D: 918-609-3600 x300  
M: 918-691-3096  
F: 918-609-3610

**Jeff Cozbey**  
*Sales & Projects*  
[j.cozbey@schock-mfg.com](mailto:j.cozbey@schock-mfg.com)  
D: 918-609-3600 x375  
M: 918-640-9191  
F: 918-609-3610



**Rocck Mallory**  
*Quality Manager*  
[rocck@schock-mfg.com](mailto:rocck@schock-mfg.com)  
D: 918-609-3600 x600  
M: 918-219-3603  
F: 918-609-3610



Schedule a free site inspection/scope review: [www.schock-mfg.com](http://www.schock-mfg.com)