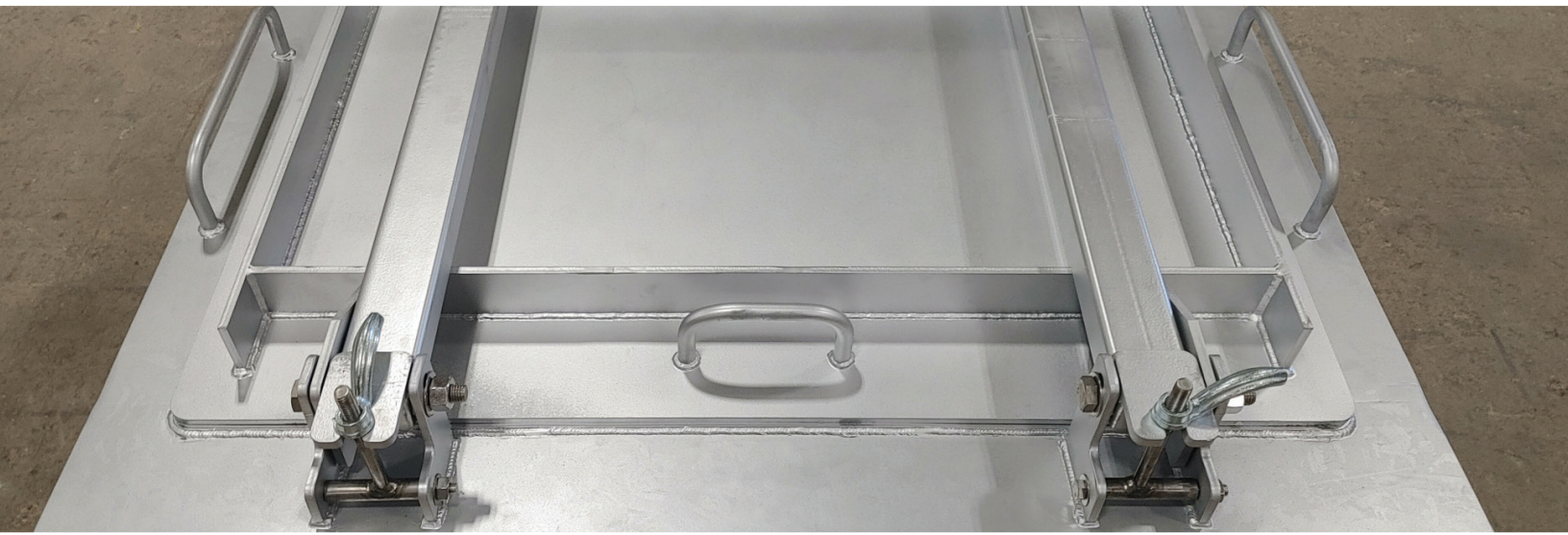


# SCHOCK GT Exhaust Doors

Cooler External Temperature & No Tools Required To Open



Casing plate prepared for new door frame.



Interior view of universal door frame to accommodate existing stud.



New Schock door in 7F breech duct.



View of high-temperature gasket layers.



Interior 409SS pan.

Schock Replacement Doors for GT exhaust compartments are engineered to provide secure sealing, easy access, and straightforward installation. All exhaust doors have stainless steel hardware and interior liners. Available in two standard sizes, both the frames and the liners are adaptable to your specific openings.

## Schock GT Exhaust Door Engineering

- High-Temperature, Double Gasket Sealing Design
- Gaskets are Field Replaceable (Complete Kits)
- No Tools Required To Open
- Personnel-Safe Outer Casing Temperatures
- Interior/Exterior Grab Bars/Handles
- All SS Hardware
- 409SS Interior Liner
- Adaptable to Flat or Curved Casing Plates
- 20" x 24" or 20" x 36"

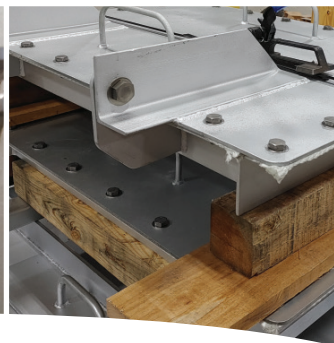
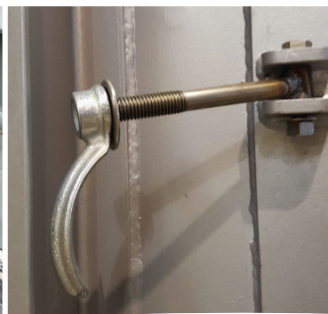
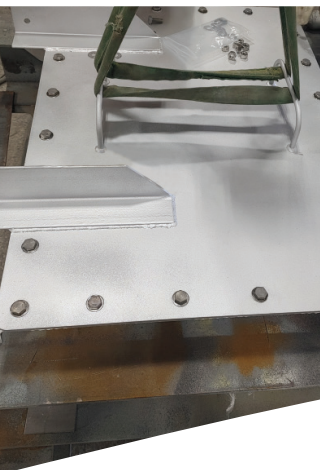
## Schock Installation Advantages

- Installs in One Day
- Ready To Install: All Hardware Pre-Assembled
- Adaptable Frames and Interior Liners
- Protective, Secure Packaging/Palletization
- Complete Assembly Instructions Provided
- Technical Assistance or Turnkey Installs Available



# SCHOCK GT Exhaust Doors

Double-Sealing & Long-Lasting, with 1-Day Install



Exterior door during fabrication.

Double gaskets are field-replaceable.

Handle nuts for tool-free removal of crossbars.

Preparation for shipping of plug style door.

Exterior casings can be flat (shown here) or curved.

**Gene Schockemoehl**  
President

[gene@schock-mfg.com](mailto:gene@schock-mfg.com)  
D: 918-609-3600 x200  
M: 918-625-2098  
F: 918-609-3610

**Scott Schockemoehl**  
General Manager

[scott@schock-mfg.com](mailto:scott@schock-mfg.com)  
D: 918-609-3600 x100  
M: 918-639-3201  
F: 918-609-3610

**Jeff Cozbey**  
Sales & Projects

[j.cozbey@schock-mfg.com](mailto:j.cozbey@schock-mfg.com)  
D: 918-609-3600 x375  
M: 918-640-9191  
F: 918-609-3610



**Jeff Graham**  
Sales & Projects

[j.graham@schock-mfg.com](mailto:j.graham@schock-mfg.com)  
D: 918-609-3600 x350  
M: 918-508-5544  
F: 918-609-3610

**Laquinnia Lawson, Jr.,**  
Professional Engineer

Engineering Manager  
[llawson@schock-mfg.com](mailto:llawson@schock-mfg.com)  
D: 918-609-3600 x300  
M: 918-691-3096  
F: 918-609-3610

**Rocck Mallory**  
Quality Manager

[rocck@schock-mfg.com](mailto:rocck@schock-mfg.com)  
D: 918-609-3600 x600  
M: 918-219-3603  
F: 918-609-3610



Schedule a free site inspection/scope review: [www.schock-mfg.com](http://www.schock-mfg.com)